

Patrol Watch Personalities allow user defined shifts (night shift, dayshift, etc) to have user defined behavior. Certain event responses may only be desirable while the user is at work - others during the night. Each shift responds only as the user desires. *If you pay for webphone email per byte - you don't want to waste emails sent while you're at home.*

Patrol Watch Assignments

Shift 1

begin shift: 08:00
end shift: 17:00
day(s): MTWTF

Event based events

- event resp 1
- event resp 2
- event resp 3
- event resp 4
- event resp 5

e-mail alarms

Shift 2

begin shift: 20:00
end shift: 07:30
day(s): MTWTF

Event based events

- event resp 1
- event resp 2
- event resp 3
- event resp 4
- event resp 5

e-mail alarms

Shift 3

begin shift: 08:00
end shift: 21:00
day(s): SS

Event based events

- event resp 1
- event resp 2
- event resp 3
- event resp 4
- event resp 5

e-mail alarms

Default

event resp 1

event resp 2

event resp 3

event resp 4

event resp 5

e-mail alarms

Store Values

Command Console

This screen provides a concise view of current status, allowing direct control of most peripherals with the click of a button. This is also the primary screen for accessing all secondary screens on the C2Home® Server. Secondary screens include:

- Log of all events
- Video screen
- Property Layout tools
- All setup and configuration screens
 - e.g. timed events, patrol watches

C2Home (TM) Server

File Setup Tasks Video Help

COMMAND CONSOLE

ALARM! ... Dec 20 02:00:00 Alarm! !!

STATUS REPORT

A1	A2	A3	A4
Pool Pump	Driveway Lt	Lroom Lt	Sprinkler
ON	ON	OFF	OFF
A5	A6	A7	A8
Office PIR	Door Road	Cam 1 Sw	
ON	ON	OFF	OFF
A9	A10	A11	A12
BR TV	Cam 2 Sw	Cam 3 Sw	Cam 4 Sw
OFF	OFF	ON	ON
A13	A14	A15	A16
			Office Lamp
OFF	OFF	ON	ON

Integral Controls

Device: A 1

selected device

OFF ON

DIM BRITE

All Units Off

Status Request

Property Layout

Users can create a layout of the control space from scratch, or load GIFs or JPEGs as backgrounds and place device icons to create clickable HTML maps. These layouts are instantly integrated into the C2Home® Server and assessable via the Browser View. Corresponding device labels and WML screens are also assigned here by the user. Users can load their own ICON stencils or use those provided.

Property Map Designer

Background: f:\zback\2home\DOC\brothun\1st_Floor.jpg

CONTROL TYPE

- No Link
- X-10 Dimmer
- X-10 PIR Sense
- X-10 Timed Dev
- Camera

OUTPUT MAP

- basement
- 1st Floor
- 2nd Floor
- User define

SAVE MAP

1st_Floor.html

Browser View

In addition to e-mailed alarms and status reports, the server can be configured to answer direct dial up connections, respond on a fixed (DSL or Cable) connection, or call out to an ISP. E-mail includes alarm status and information to access remotely. When accessing remotely users can choose to display graphics-rich HTML as shown or pure text based html for more primitive browsers.

Browser View

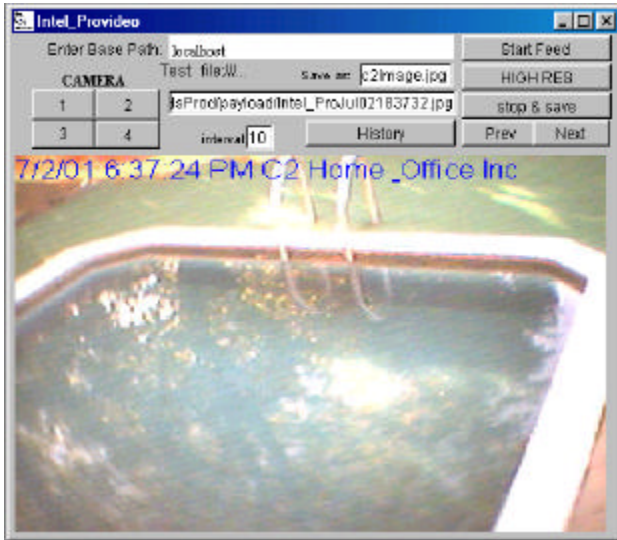
STATUS

ALARM! ... Dec 20 02:00:00 Alarm! !!

Property Map

Choose the Floor View

- View 1st Floor
- View 2nd Floor
- View 3rd Floor
- View 4th Floor
- View 5th Floor
- View 6th Floor
- View 7th Floor
- View 8th Floor
- View 9th Floor
- View 10th Floor
- View 11th Floor
- View 12th Floor
- View 13th Floor
- View 14th Floor
- View 15th Floor
- View 16th Floor
- View 17th Floor
- View 18th Floor
- View 19th Floor
- View 20th Floor



Video

In addition to basic web cam access, the C2Home® Server provides the ability to see archived JPEGs remotely, such as snaps grabbed when particular events occur. C2Home® provides the ability to use a browser to control the cameras remotely and SSL to ensure privacy. *Do you know who's intercepting your webcam video now?*

Phone and PDA Access

Users are able to access the C2Home® Server with handheld devices while on the go. These allow not only reports of status, and a view of



event logs, but also remote control of X.10 devices. *This really comes in handy if you forgot to turn on the sprinkler or the pool before you left home.*

Pricing *

- C2Home® Server Software \$129.95
- C2Home® Basic Starter Kit \$159.99
- C2Home® Kit with Video \$289.99

See our catalog for other peripherals and home networking products. Registered dealers receive up to 15% discount.

*does not include shipping. NJ residents subject to sales tax. Pricing of kits subject to change depending on supplier prices.

BUY ON-LINE!



For More information contact:

Custserve@c2home.com
www.c2home.com

or write

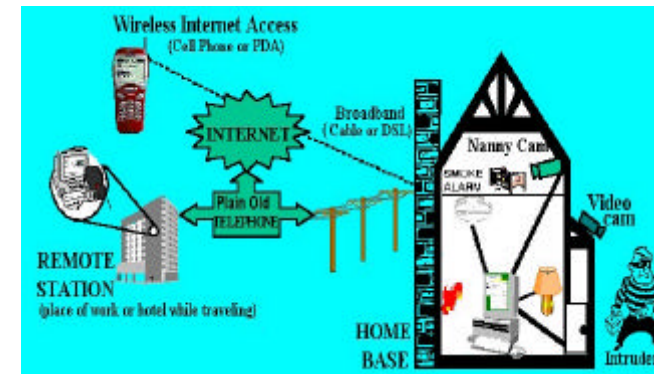
C2 Home & Office Inc.
 P.O. Box 5162
 Hazlet, NJ, 07730



C2Home Server – US Patent Pending 1998
 C2Home is a registered trademark with the US Patent and Trademark Office.

C2Home® Server

Take Command and Control Your Home Today!



- PC based Home Security, Automation, and Networking.
- Compatible with many webcams and X.10 peripherals.
- Embedded Server for remote access to controls, status, video.
- Secure via SSL and CBA
- Integrated *Layout Tools* for customizing the view presented locally and remotely.
- Schedule events (appliance on, off, dim, etc)
- Trigger events with other events (such as infra-red sensors, door switches, etc).
- Log all events detected or triggered.
- Triggered Video capture
- Three *Duty Patrol Personalities* schedule night, day, or weekend responses
- *Archive video snaps* taken based on triggered events.
- *Remote Access* via Internet or Direct Dial from almost any HTML or WML based Web Browser (PC, Webphone, or PDA)